

ROOTED RELATIVE FUND

Extending the CDFI Toolbox: The Rooted
Relative Fund in Practice



Rooted Relative Fund



Suzanne Devenport
Chief Executive Officer
RCAC



Tedd Buelow
Assistant Director
RCAC Rooted Equity Fund, LLC



Tammie Touchine
Relationship Manager
RCAC Rooted Relative Fund



THE ROOTED RELATIVE FUND JOURNEY

2020

RCAC receives initial grant from MacKenzie Scott

2021-2022

RCAC + RCLLC create the Rooted Relative Fund

Late 2023 - Early 2024

Community Lending Catalysts are identified and onboarded for the RRF Pilot + RRF Evaluation is launched

2023

An Indigenous Advisory Council is formed and engaged to build and design the RRF

2025

Initial RRF loans are deployed and \$1.9 million lent

Late 2024

Community Lending Catalysts engaged to build their unique RRF program

2026

Celebrated RRF 2-year anniversary
19 loans

The Indigenous Advisory Council (IAC)

The RRF intentionally engaged Indigenous financial experts, entrepreneurs, and thought leaders to join us on a 5-month journey to form the Indigenous Advisory Council (IAC).



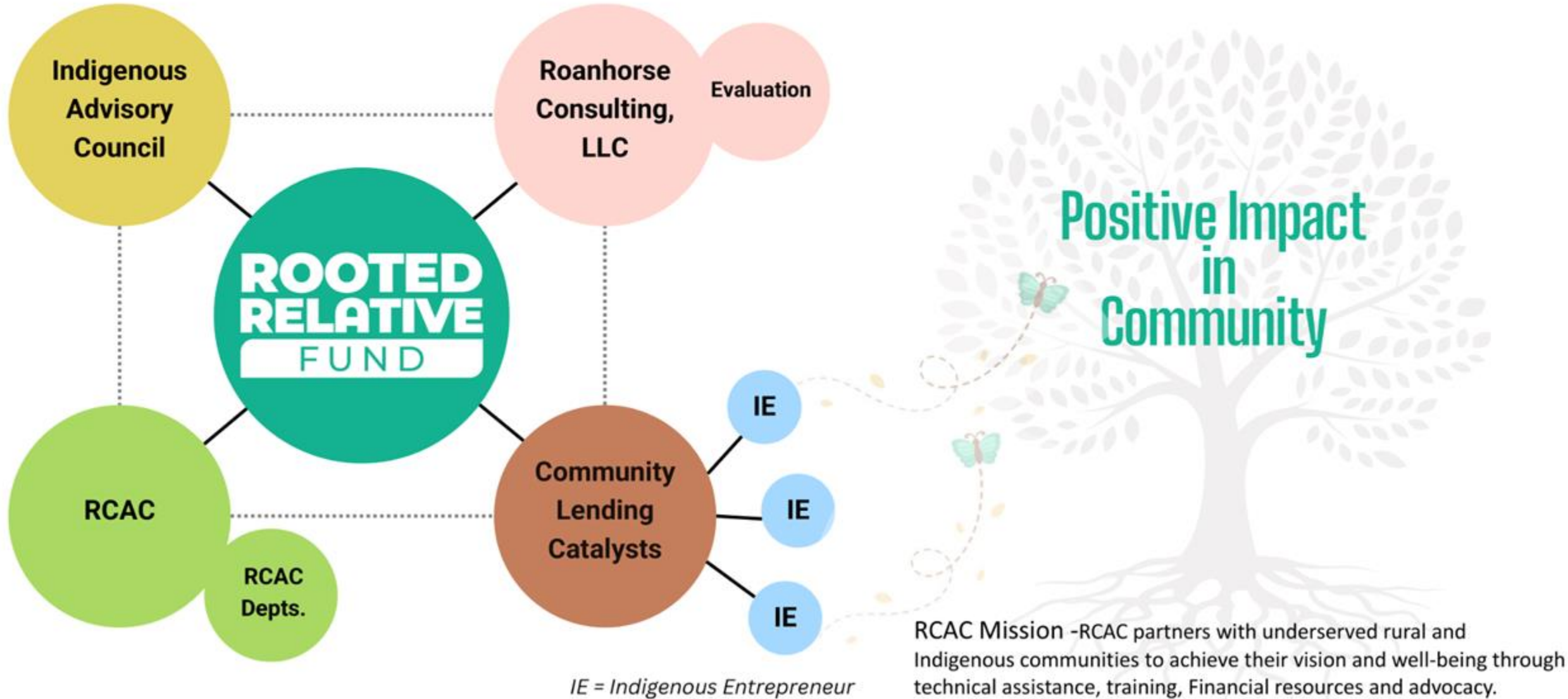
The IAC co-created the RRF's frame that helped determine the lending program's name, values, loan terms & size.



“ We need to have real decision-making power to ensure that this loan product works for us. ”

Indigenous Advisory Council Member

Rooted Relative Fund Model



Meet the team



**Suzanne
Anarde-Devenport**
RCAC CEO



**Michael
Carroll**
RCAC Vector Fund
Director



**Tammie
Touchine**
RRF Manager



**Tedd
Buelow**
Rooted Equity Fund
Manager



**Olivia
Roanhorse**
RRF Evaluation Team



**Shawna
Douma**
RRF Evaluation Team

SUPPORT

MANAGEMENT

EVALUATION



**Vanessa
Roanhorse**
RCLLC Founder/CEO



**Sean
Campbell**
RRF Field Expert &
Researcher



**Sandra
Ortsman**
RRF Community Partner
Engagement Specialist



**Justine
Correa**
RRF Project Manager



**Casey
Long**
RRF Evaluation Team



**Daniel
Oxendine**
RRF Evaluation Team

Community Lending Catalysts



Albuquerque, NM

Founded in 2004, with a mission to change the status quo in Native-owned business through tailored mentorship, financial literacy, digital skills programs, specialized technical assistance, and services for tribes and tribal enterprises.

**STARTUP
TUCSON**



Tucson, AZ

Founded in 2012, Startup Tucson is a community nonprofit that exists to elevate entrepreneurs to create innovations that build a more equitable, vibrant and forward-looking economy.

**LOCAL FIRST
ARIZONA.**

Phoenix, AZ

Founded in 2003, Local First Arizona is committed to community and economic development throughout Arizona. Their work connects people, locally owned businesses and communities for meaningful actions that build a diverse, inclusive, and prosperous Arizona economy.

| | |
|----------------------------|-------------------------------------|
| Number of loans | Total dollar amount of loans |
| 19 | \$3.5 million |
| Average loan amount | Average loan term length |
| \$183,258 | 6 years 3 months |
| Delinquencies | Defaults |
| 0 | 0 |



Number of Loans by State

New Mexico – 4

Arizona – 13

California – 2

Number of Loans per Community Lending Catalyst

New Mexico Community Capital – 5

Local First Arizona – 8

Start Up Tucson with Indigenous Community Collaborative – 4

RCAC - 2

Rooted Relative Fund Progress To Date

Through the CLC waterways, we now support 19 Indigenous Entrepreneurs

RRF Borrower Stories

- Bidii Baby Foods, LLC
- Lux Pup Mobile Grooming, LLC
- MyBlueSky, LLC dba PhXTacoEats

Continued Grounding for RCAC Staff – Loan Fund and Finance

RRF + RCAC's Building Rural Economies (BRE) Collaboration

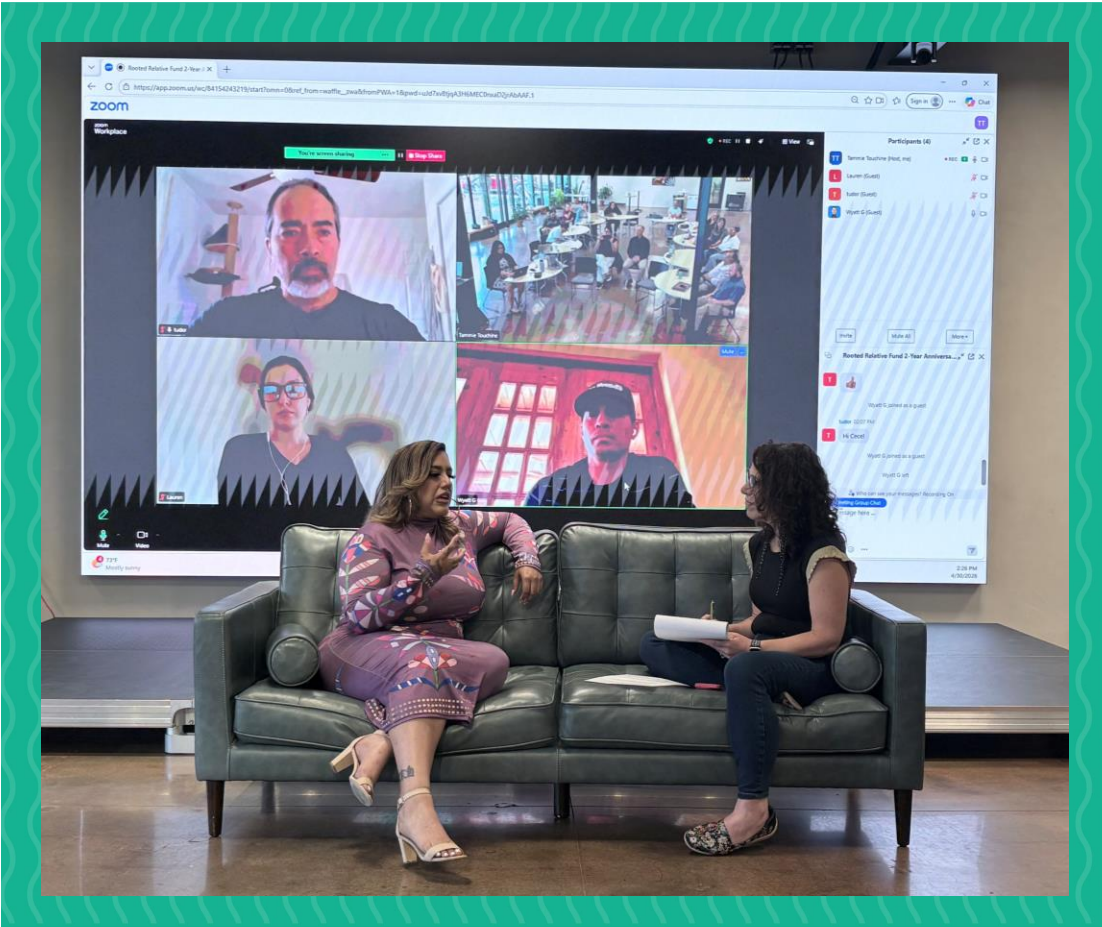
- Focus on 4 Tribal Communities in CA that BRE is already supporting with funding from the Yoche Dehe Wintun Nation: 1) Mesa Grande Band of Diegueno Mission Indians, 2) Cahuilla Band of Indians, 3) Yurok Alliance for Northern California Housing, 4) Hoopa Valley Tribe
- Additional grant funding received from US Bank

2nd Year RRF Anniversary

- RRF Team Celebrated in Albuquerque, NM at New Mexico Community Capital Occidental Life Building Community Lending Catalysts, and Friends.



RRF Value Proposition



RRF Borrower panel at RRF 2-year anniversary celebration – Pictured: Cece Meadows, Prados Beauty, LLC, Wyatt Gilmore, Native Partners Tech, LLC, Tudor Montague, Spirit Mountain Coffee Brewing and Roasting, LLC, and Lauren Lester, New Mexico Community Capital, CLC partner

- Shifts capital using Indigenous-led solutions and agency
- Leverages RCAC's institutional capacity as a CDFI with fewer restrictions, increased flexibility, and lower interest rates
- Increases capacity of Community Lending Catalysts and offers a financing program for their program participants
- Strengthens community-driven ecosystems
- Reinforces connections between businesses and connection with Tribal community
- Reduces barriers to affordable financing
- Repairs traumatic relationship with lenders
- Encourages and catalyzes replication

Rooted Equity Fund



Need for flexible investment tool in addition to RCAC's CDFI



Low interest rates and flexible terms made possible through initial unrestricted grant from MacKenzie Scott



Creative approaches to reciprocal relationships, underwriting and risk tolerance



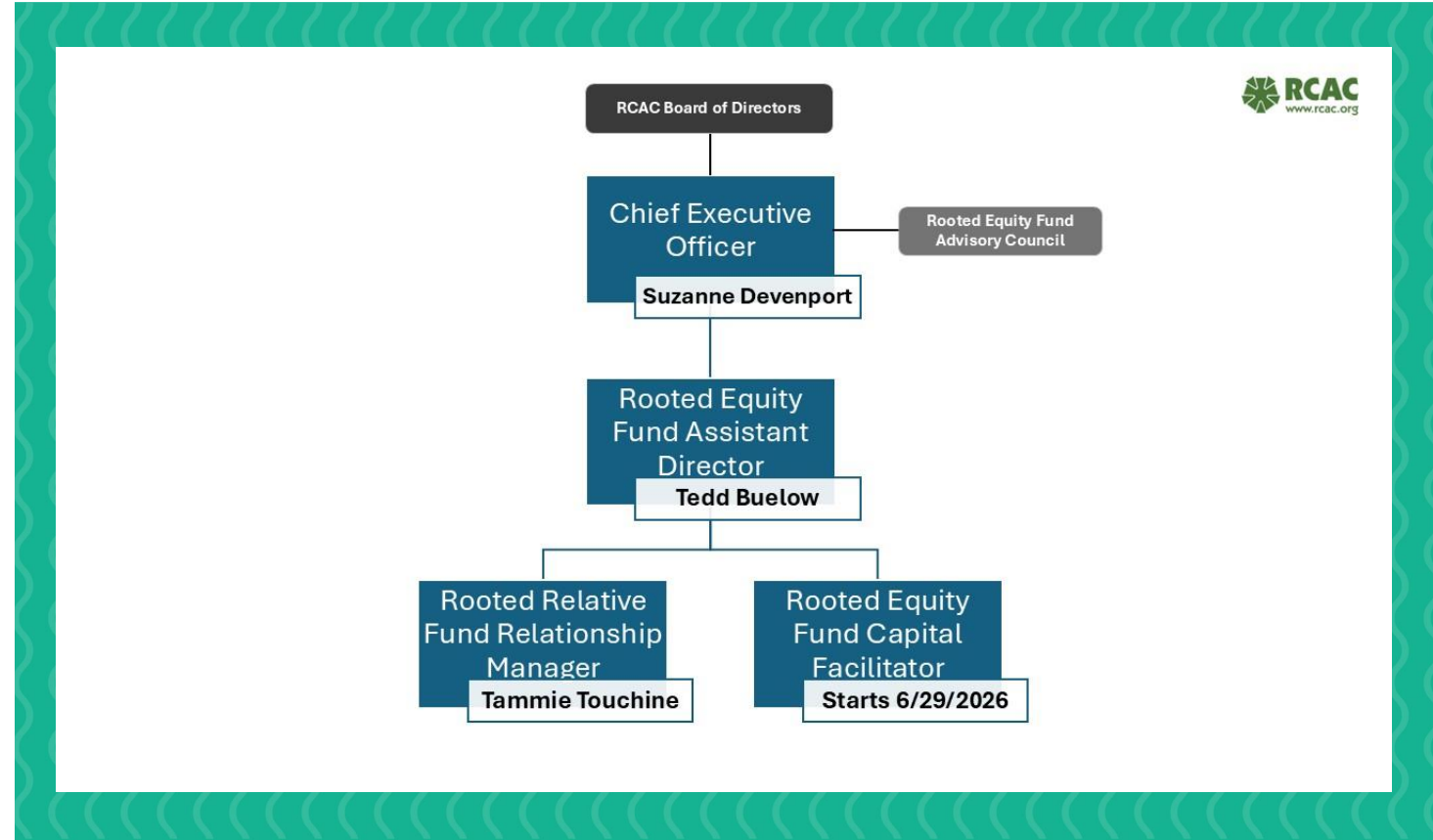
REF LLC Created in 2023 to “house” non-traditional lending activity



Protect RCAC and loan fund from risk rating concerns and other liability

Programs

- **Rooted Relative Fund**
- **Great Plains Housing Initiative**
Native Impact Fund
- **Polanco Parks** - Manufactured Housing for Farm Workers in Riverside County, California



Pros

- Extend the Reach of RCAC's CDFI
- Flexibility
- Affordability
- Sandbox for innovation
- Internal institutional grounding and adoption

Organizational Efforts

- Annual Fees and Tax ~ \$1,000 per year
- Service Agreement
- Separate program specific processes and procedures
- Managing Advisory Council
- Fund Raising and Operating Costs
- Organizational adoption



Any Questions?



THANK YOU!

Scan the QR code to learn more
about the Rooted Relative Fund
or visit www.rcac.org





Extending the CDFI Toolbox: The Rooted Relative Fund in Practice



Sponsored by



Sponsors:



FHLBANKS
LENDING THAT POWERS COMMUNITIES



Special Thanks to Our Sponsors



Sponsored by



June 2-4, 2026



11th Annual Oweesta Native CDFI Capital Access Convening



Bangor, Maine