

The Tribal Community Vision Partnership

Transformative Vision
Transformative Funding



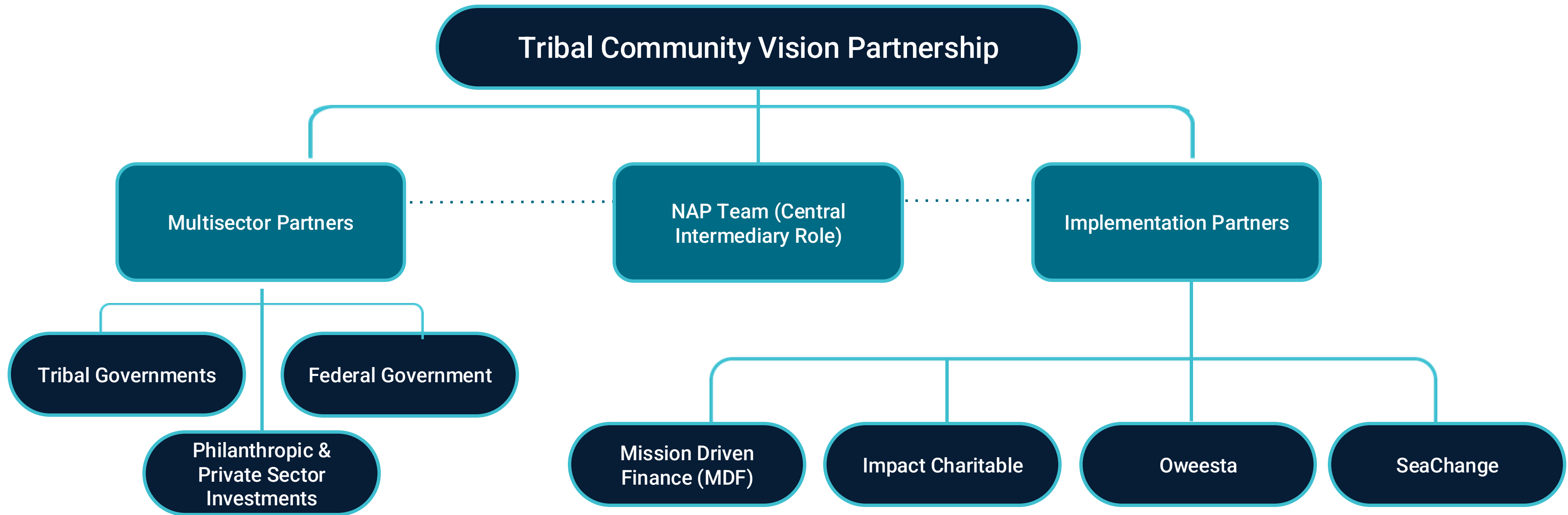
NATIVE AMERICANS
IN PHILANTHROPY



The Vision Partnership

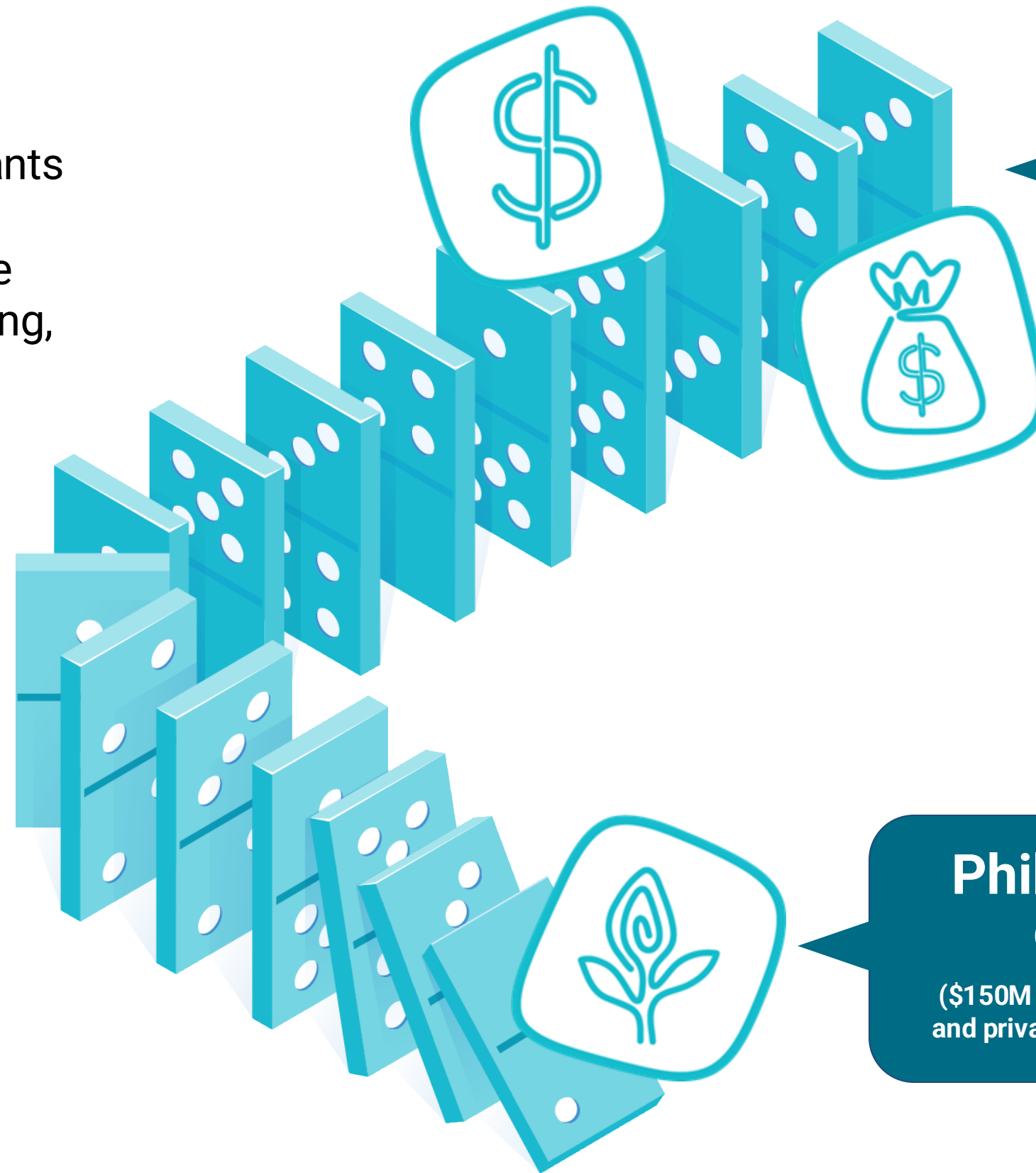
A national **public-private partnership** driving capital into Indian Country to promote Tribal self-determination and sustainable economic development by mobilizing federal, private, and philanthropic resources to address critical needs: **capacity-building, collateral support, and equitable access to capital.**

Tribal Community Vision Partnership: Structure



A High-Impact Leverage Point

Strategic philanthropic investment in the form of grants and rotating MRIs will help incentivize and attract private investment and federal funding, **for a leverage ratio of 1:8.**



Private Capital

(\$1B in private & public investment)

Philanthropic capital

(\$150M in grants, PRIs, MRIs, and private-sector investment)