

# Mountain | Plains Regional Native CDFI Coalition



# Locations | The Mountain | Plains Regional Native CDFI Coalition

## Montana

-  NACDC Financial Services  
Browning, MT
-  Montana Native Growth Fund  
Hays, MT
-  Native American Development Corporation  
Billings, MT
-  Plenty Doors CDC  
Crow Agency, MT
-  The People's Partners for Community Development  
Lame Deer, MT



## Wyoming

-  Wind River Development Fund  
Fort Washakie, WY

## South Dakota

-  Four Bands Community Fund  
Eagle Butte, SD
-  Akiptan, Inc.  
Eagle Butte, SD
-  Black Hills Community Loan Fund, Inc.  
Rapid City, SD

## Colorado

-  Mountain Plains CDC  
Denver, CO

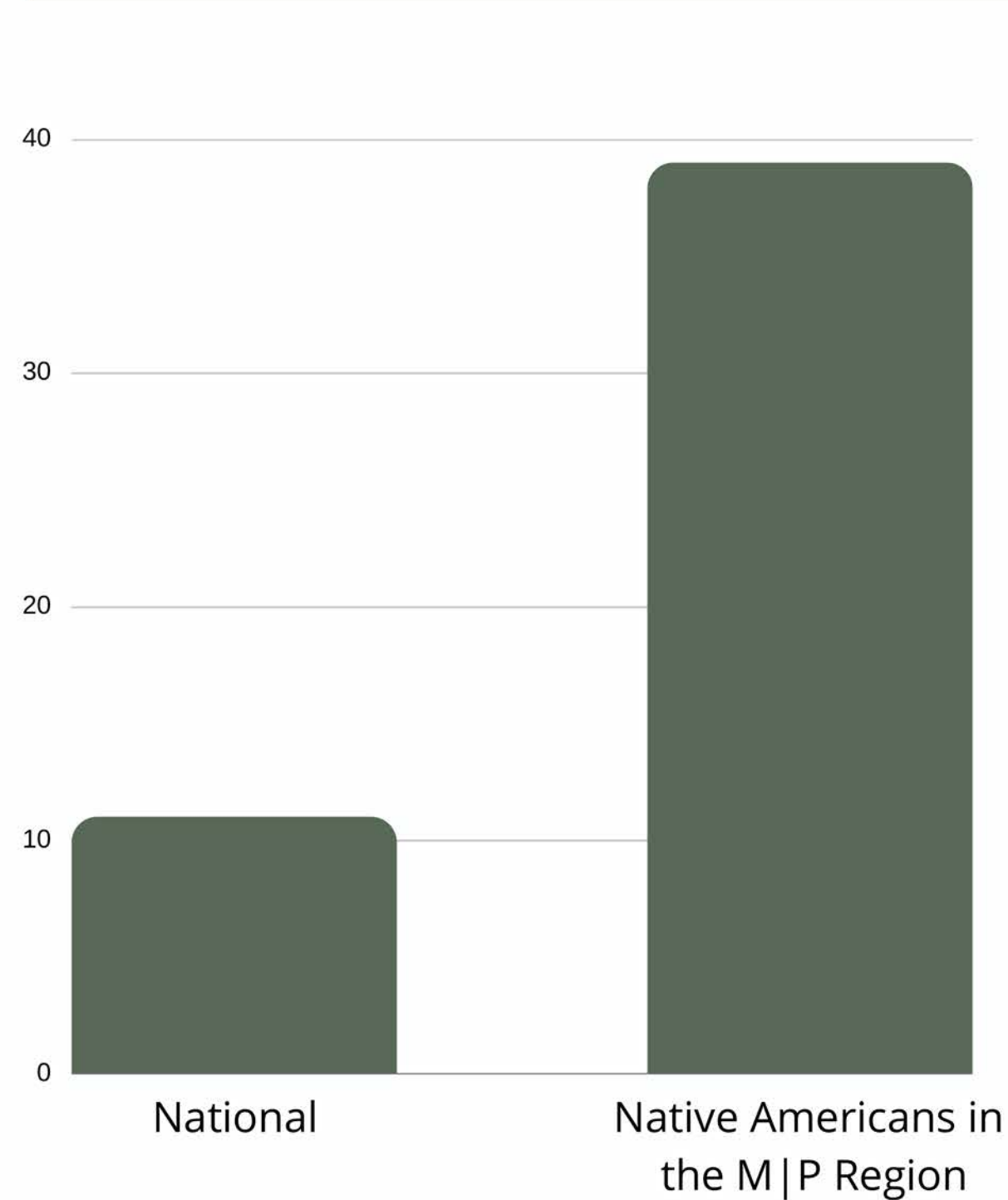


1. **A Broken System** | Native systems have been left behind
2. **Values & Culture** | A new economic system fueled by Indigenous values & culture
3. **The Vision** | Systemic change promoting equity
4. **The Solution** | Native CDFIs are tackling systemic barriers
5. **Our Success** | A uniquely Indigenous way of leading
6. **An Invitation** | How to build together
7. **Members** | Mountain | Plains Regional Native CDFI Coalition

# A Broken System | Native communities have been left behind



**By design, mainstream economic systems oppress & exclude Native communities.**



## Racial Wealth Gap: Household Wealth

**White**

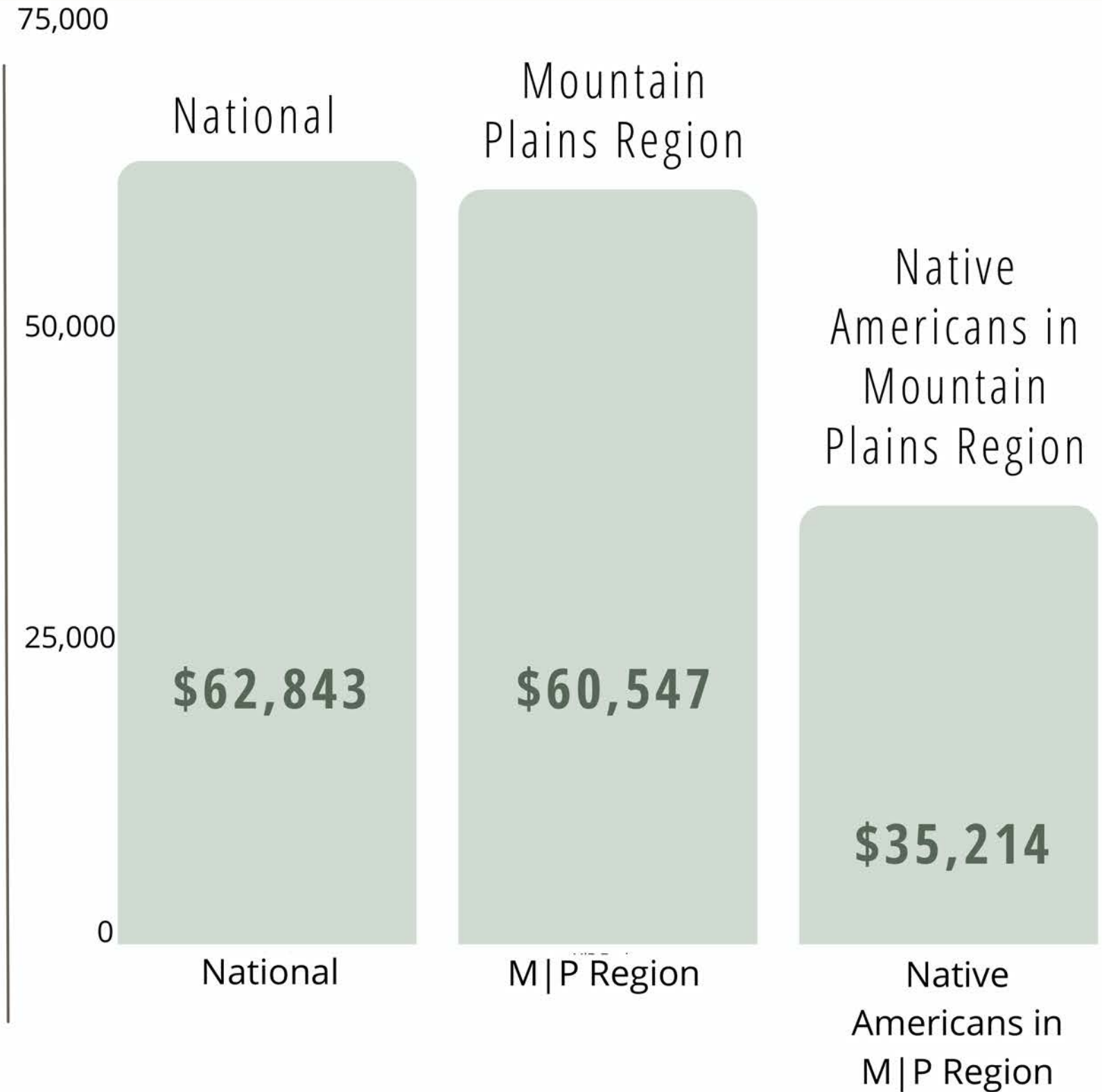


**\$1.00**

**Native**



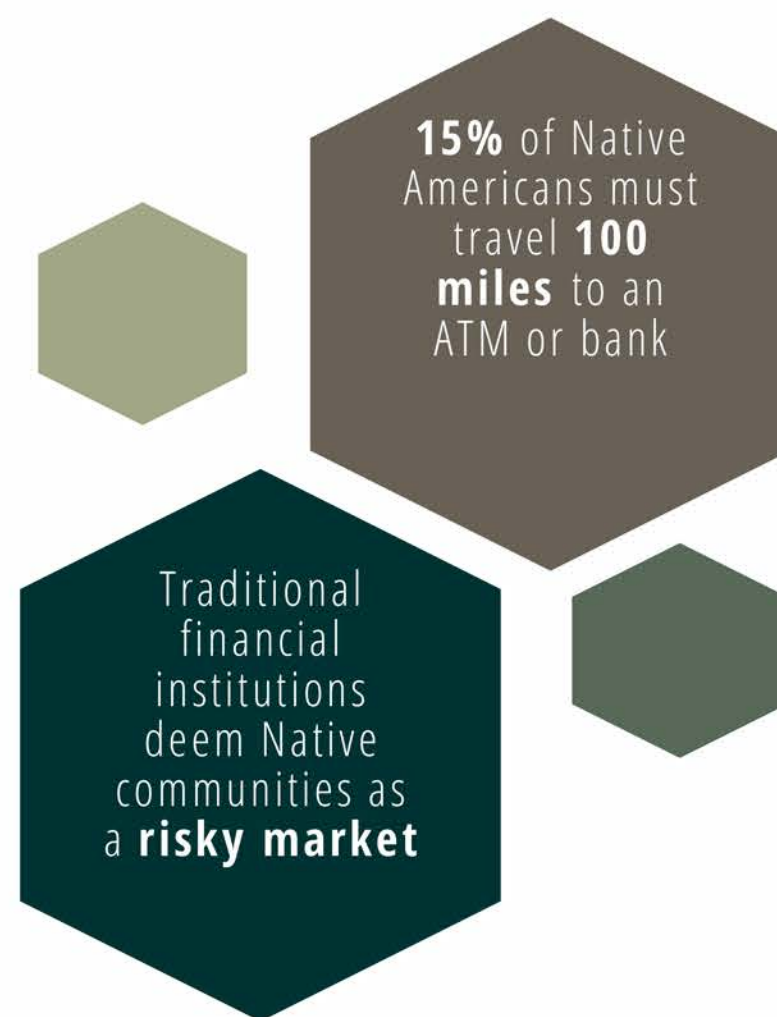
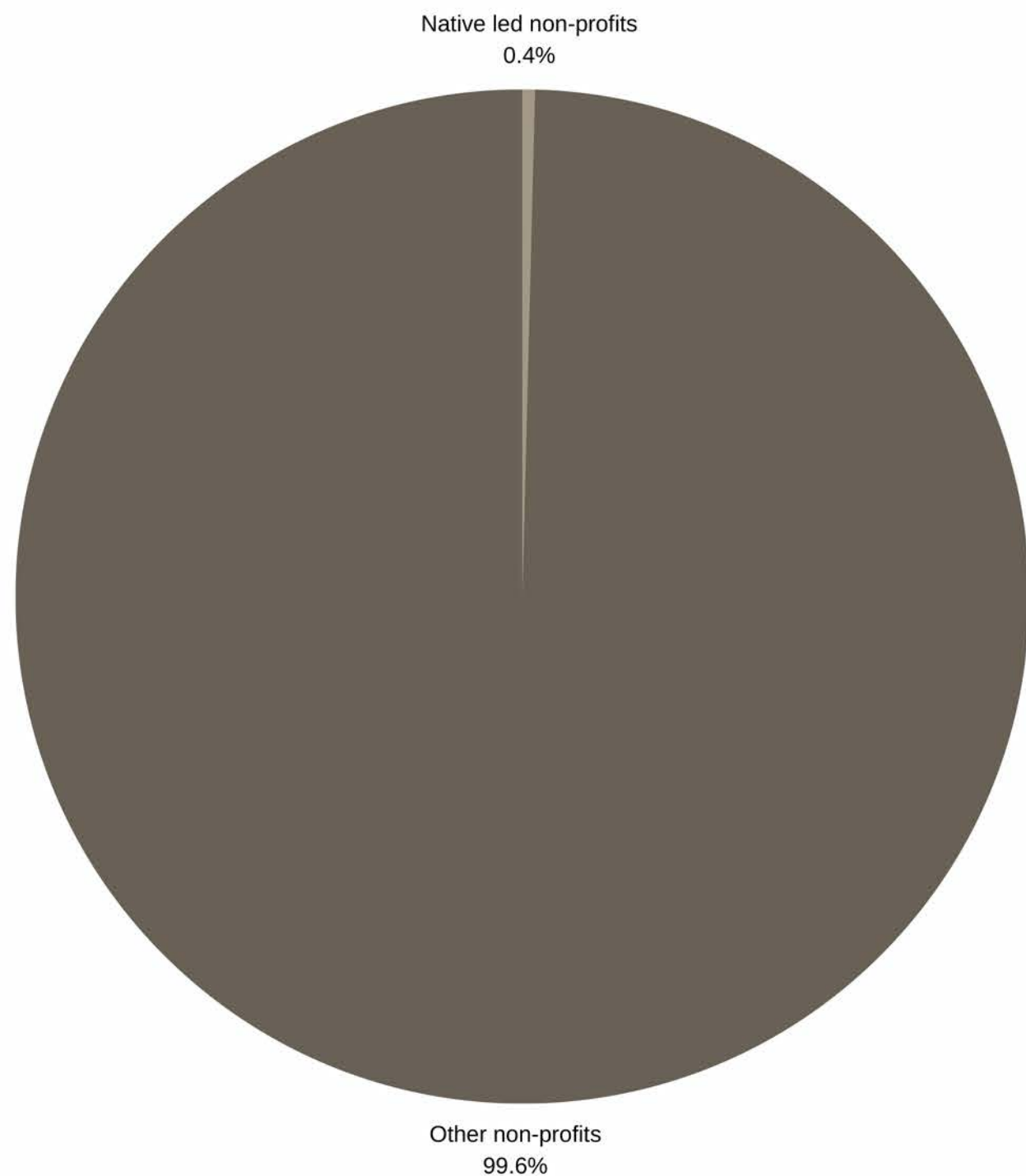
**\$0.08**



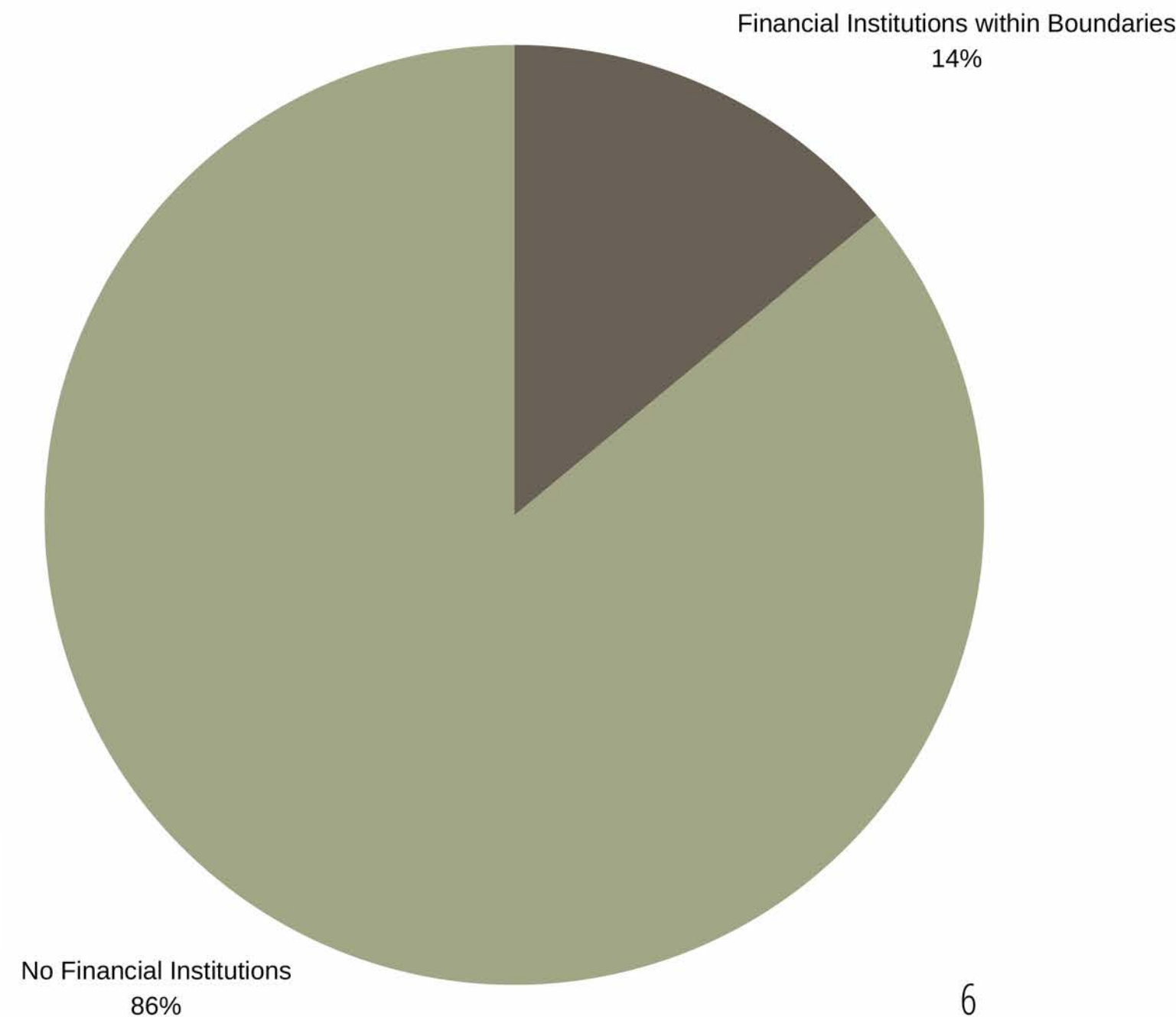
# A Broken System | Native communities have been left behind

Systemic barriers prevent Native access to capital resulting in persistent poverty.

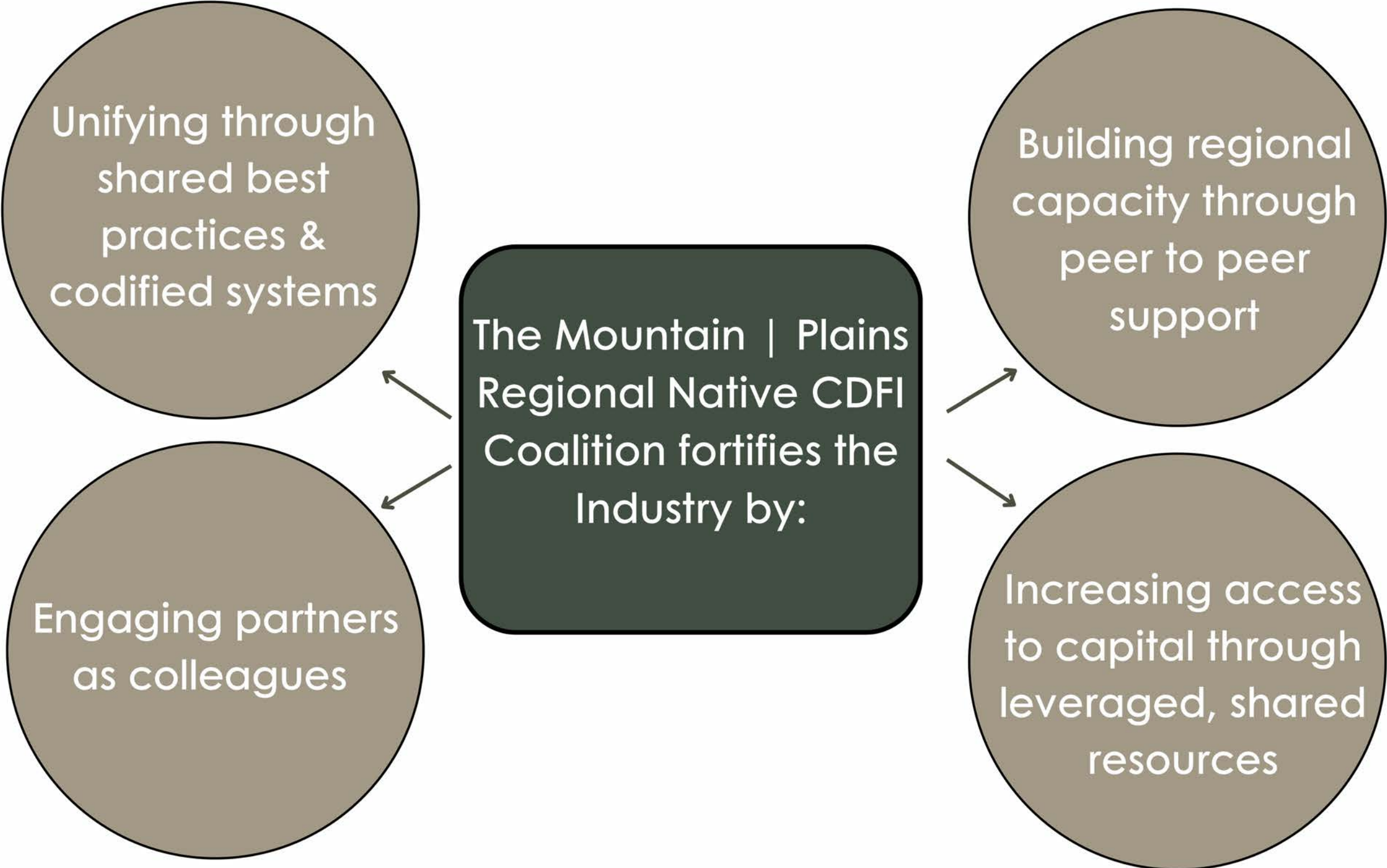
## Annual Private Funding 2002-2006



## Reservations with Financial Institutions



# An Ecosystem Approach | Fortifying the Region's Indigenous Finance Industry



# Values & Culture | A new economic system fueled by Indigenous values & culture



**Native Community Development Financial Institutions (CDFIs) emphasize holistic, relationship-based solutions grounded in Indigenous values and culture.**

THE MOUNTAIN | PLAINS REGION NATIVE VALUES



# The Solution | Native CDFIs are tackling systemic barriers

**Native CDFI female leadership catalyzes systemic change.**



## Native Women in Leadership



Women comprise **72%** of Native CDFI Leadership



Women comprise **64%** of Oweesta Visionary Leaders

- Outstanding achievement for long-term contribution to the Native CDFI's



Women comprise **46%** of CDFI Leadership

- Only **27%** are women of color



Women only comprise **27%** of Financial Services Leadership

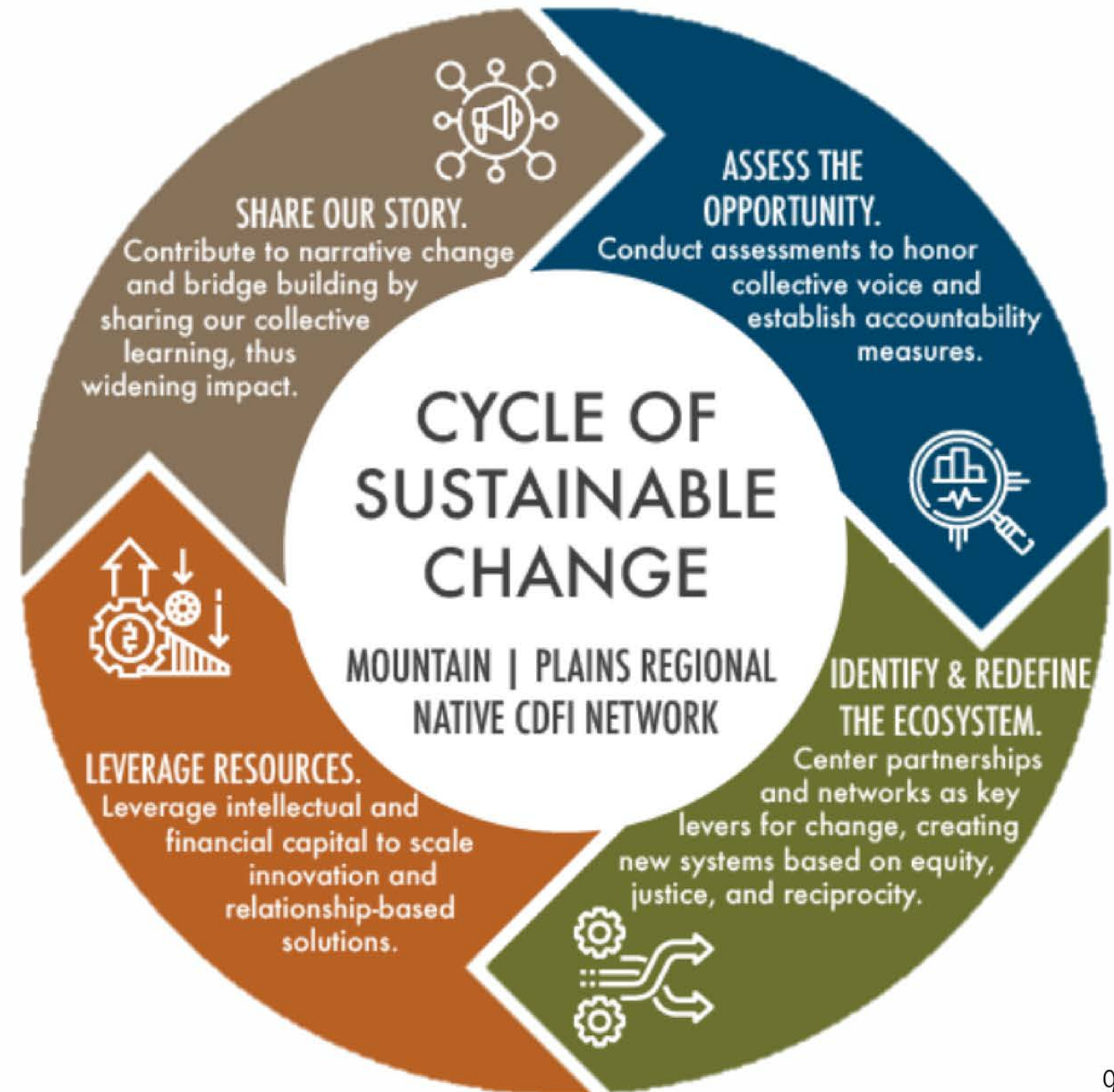
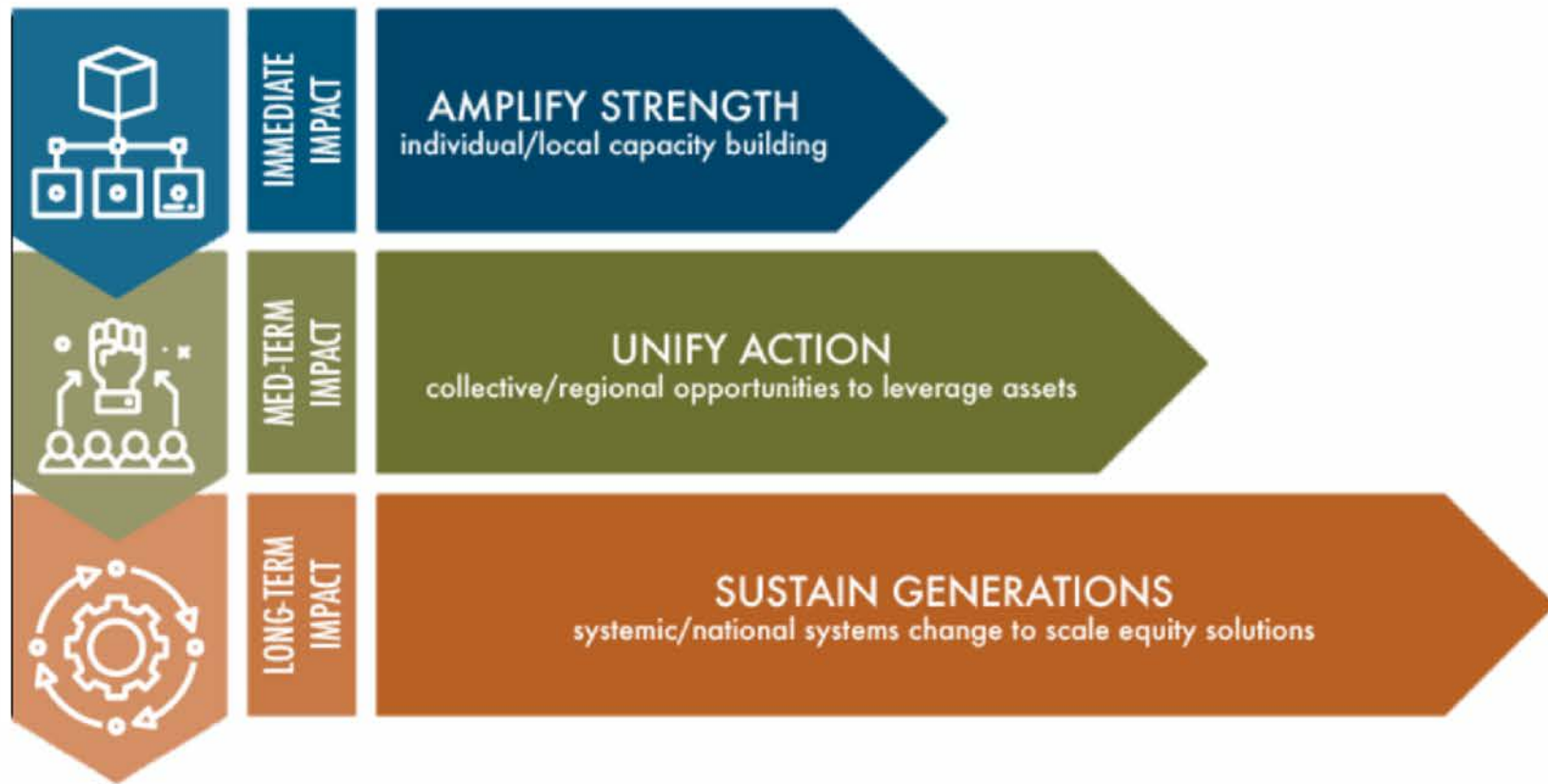


Women only comprise **26%** of Tribal Leadership



# The Solution | Native CDFIs are tackling systemic barriers

Native CDFIs are integrating Native values & culture into systems, strategies, and practices.



# The Vision | Systemic change promoting equity



**Intellectual Capital**  
Project 1 | Regional Indigenous Finance Industry Growth Plan

**Human Capital**  
Project 2 | Workforce & Professional Development

**Shared Capacity**  
Project 3 | Non-Physical Infrastructure Development

**Physical Infrastructure**  
Project 4 | Crow Nation Innovation Center

**Financial Resources**  
Project 5 | Regional Revolving Loan Fund

**Data Sovereignty** |  
Assess the Opportunity

**Relationship-based** |  
ID Ecosystem

**Narrative Change** |  
Share Our Story

**Redistribute Wealth** |  
Leverage Resources

Pilot native designed financial solutions  
Codify best practices  
Systematize regional innovation  
Contribute new models and thought leadership to the field  
Deepen & broaden the Native CDFI workforce  
Increase organizational efficiencies

<b>Finance Industry Impacts</b>	<b>Native Economy Impacts</b>
Amplify Strength	Individuals & Families
CDFIs	Enterprises & Businesses
Unify Action	
Regional Coalition	
Sustain Generations	
Finance Industry Ecosystem	Regional Native Economies

Thriving Regional Native Economies fully served by a responsive Indigenous Finance Industry



# Members of the Mountain | Plains Regional Native CDFI Coalition

**Charlene Johnson**  
Plenty Doors Community Development Corporation  
Cfjohnson@plentydoorscdc.onmicrosoft.com

**Lakota Vogel**  
Four Bands Community Fund  
lakota@fourbands.org

**Sharon Small**  
The People's Partners for Community Development  
sksmall@hotmail.com

**Paul Huberty**  
Wind River Development Fund  
paul@wrdf.org

**Barbara Schmitt**  
Black Hills Community Loan Fund, Inc.  
barbaras@bhclf.org

**Angie Main**  
NACDC Financial Services, Inc.  
angiem@3rivers.net

**Eric Swack**  
Mountain Plains CDC  
eric@mountainplainscdc.org

**Skya Ducheneaux**  
Akiptan, Inc.  
skya@akiptan.org

**Sue Taylor**  
Native American Development Corporation  
staylor@nadc-nabn.org

**Kerry Shabi**  
Montana Native Growth Fund Development Financial Institution  
kerry@nativegrowth.org

For more information, please contact:



**Jael Kampfe**  
**Regional Competitiveness Officer, Indigenous Impact Co.**

406-671-9209 | 305 E Main St | Bearcreek, MT 59007  
Jael@IndigenousImpact.Co | www.IndigenousImpact.Co